

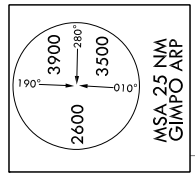
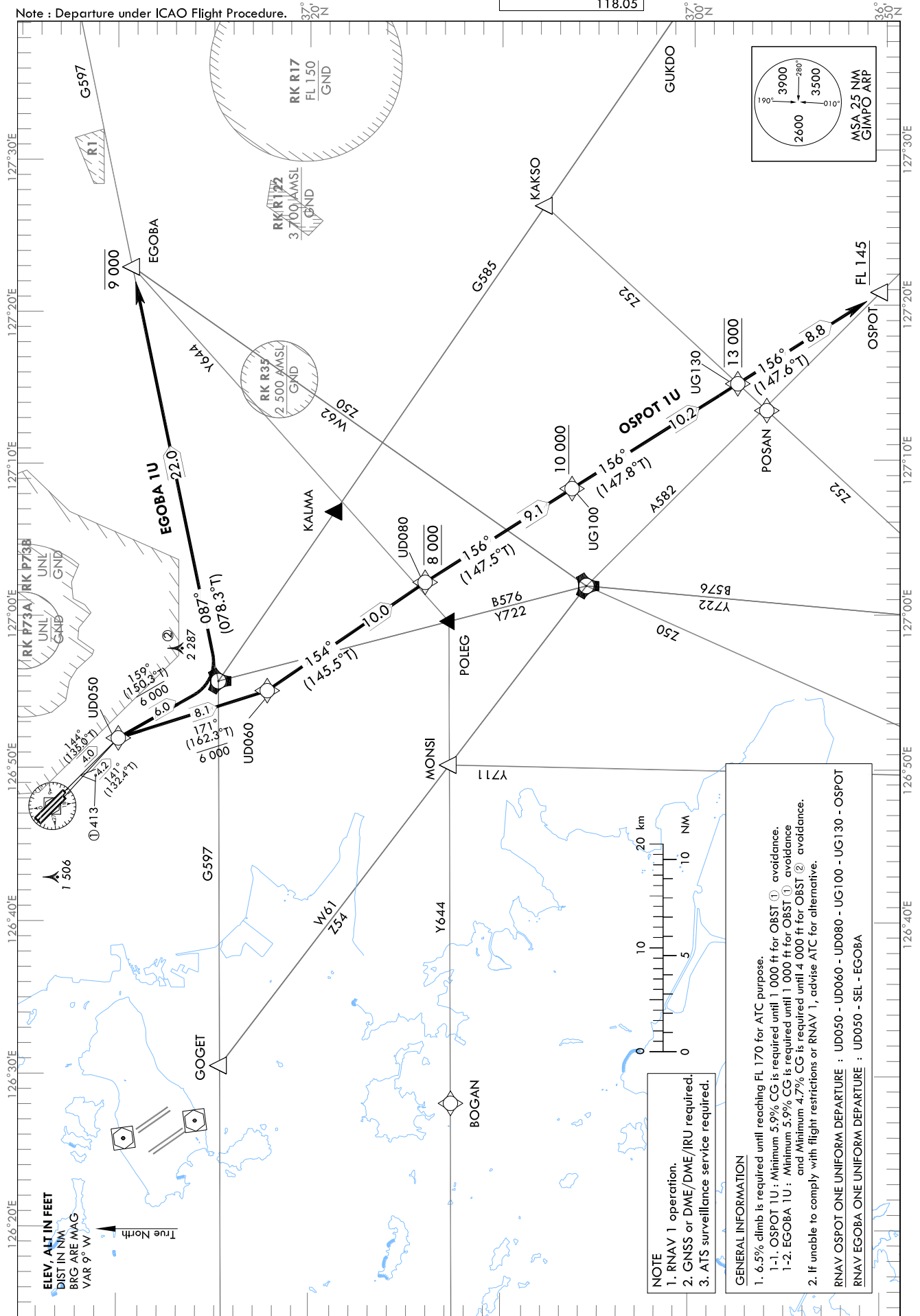
STANDARD DEPARTURE CHART
INSTRUMENT (SID) - ICAO

TRANSITION ALT 14 000
TRANSITION LVL FL 140

SEOUL	DEP	125.15
		121.4
		124.8
GIMPO	TWR	118.1
		118.05

SEOUL/Gimpo Intl(RKSS)
RWY 14L/R
RNAV OSPOT 1U, RNAV EGOBA 1U

Note : Departure under ICAO Flight Procedure.



NOTE
1. RNAV 1 operation.
2. GNS or DME/DME/IRU required.
3. ATS surveillance service required.

GENERAL INFORMATION

1. 6.5% climb is required until reaching FL 170 for ATC purpose.
1-1. OSPOT 1U : Minimum 5.9% CG is required until 1 000 ft for OBST ① avoidance.
1-2. EGOBA 1U : Minimum 5.9% CG is required until 1 000 ft for OBST ① avoidance and Minimum 4.7% CG is required until 4 000 ft for OBST ② avoidance.
2. If unable to comply with flight restrictions or RNAV 1, advise ATC for alternative.

RNAV OSPOT ONE UNIFORM DEPARTURE : UD050 - UD060 - UD080 - UG100 - UG130 - OSPOT
RNAV EGOBA ONE UNIFORM DEPARTURE : UD050 - SEL - EGOBA

Change : Page control.

SEOUL/Gimpo Intl(RKSS)
RWY 14L/R
RNAV OSPOT 1U, RNAV EGOBA 1U

AERONAUTICAL DATA TABULATION

Standard Instrument Departure Procedure Coding Tables

RNAV OSPOT 1U												
Serial Number	Path Descriptor	Waypoint Identifier	Fly-over	Course/Track °M(°T)	Distance (NM)	Turn direction	Altitude (ft)	Speed (kt)	Coordinates	VPA/RDH	Navigation specification	Remarks
001	CF	UD050	-	14L-144(135.0) 14R-141(132.4)	14L-4.0 14R-4.2	R	-	-	37°30'01.9"N 126°51'58.7"E	-	RNAV 1	-
002	TF	UD060	-	171 (162.3)	8.1	-	-6 000	-	37°22'16.6"N 126°55'04.6"E	-	RNAV 1	-
003	TF	UD080	-	154 (145.5)	10.0	-	@8 000	-	37°14'03.3"N 127°02'08.6"E	-	RNAV 1	-
004	TF	UG100	-	156 (147.5)	9.1	-	+10 000	-	37°06'24.1"N 127°08'13.9"E	-	RNAV 1	-
005	TF	UG130	-	156 (147.8)	10.2	-	@13 000	-	36°57'45.7"N 127°15'01.2"E	-	RNAV 1	-
006	TF	OSPOT	-	156 (147.6)	8.8	-	+FL 145	-	36°50'18.1"N 127°20'54.9"E	-	RNAV 1	-

RNAV EGOBA 1U												
Serial Number	Path Descriptor	Waypoint Identifier	Fly-over	Course/Track °M(°T)	Distance (NM)	Turn direction	Altitude (ft)	Speed (kt)	Coordinates	VPA/RDH	Navigation specification	Remarks
001	CF	UD050	-	14L-144(135.0) 14R-141(132.4)	14L-4.0 14R-4.2	R	-	-	37°30'01.9"N 126°51'58.7"E	-	RNAV 1	-
002	TF	SEL	-	159 (150.3)	6.0	-	-6 000	-	37°24'49.0"N 126°55'42.1"E	-	RNAV 1	-
003	TF	EGOBA	-	087 (078.3)	22.0	-	-9 000	-	37°29'14.7"N 127°22'45.9"E	-	RNAV 1	-

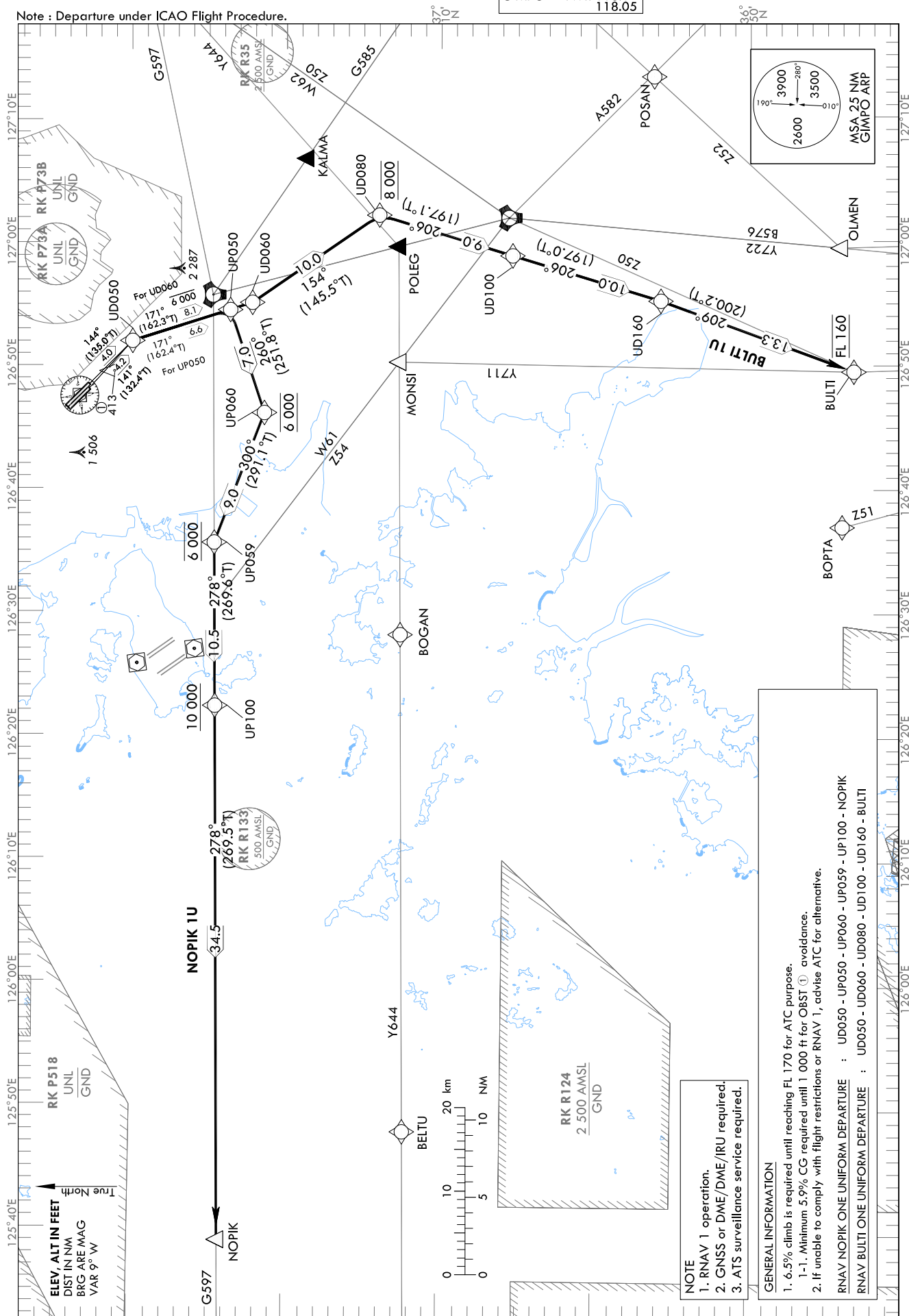
STANDARD DEPARTURE CHART
INSTRUMENT (SID) - ICAO

TRANSITION ALT 14 000
TRANSITION LVL FL 140

SEOUL	DEP	125.15
		121.4
		124.8
GIMPO	TWR	118.1
		118.05

SEOUL/Gimpo Intl(RKSS)
RWY 14L/R
RNAV NOPIK 1U, RNAV BULTI 1U

Note : Departure under ICAO Flight Procedure.



Change : Page control.

SEOUL/Gimpo Intl(RKSS)
RWY 14L/R
RNAV NOPIK 1U, RNAV BULTI 1U

AERONAUTICAL DATA TABULATION

Standard Instrument Departure Procedure Coding Tables

RNAV NOPIK 1U												
Serial Number	Path Descriptor	Waypoint Identifier	Fly-over	Course/Track °M(°T)	Distance (NM)	Turn direction	Altitude (ft)	Speed (kt)	Coordinates	VPA/RDH	Navigation specification	Remarks
001	CF	UD050	-	14L-144(135.0) 14R-141(132.4)	14L-4.0 14R-4.2	R	-	-	37°30'01.9"N 126°51'58.7"E	-	RNAV 1	-
002	TF	UP050	-	171 (162.4)	6.6	-	-	-	37°23'42.2"N 126°54'29.3"E	-	RNAV 1	-
003	TF	UP060	-	260 (251.8)	7.0	-	@6 000	-	37°21'30.5"N 126°46'08.9"E	-	RNAV 1	-
004	TF	UP059	-	300 (291.1)	9.0	-	@6 000	-	37°24'43.8"N 126°35'37.7"E	-	RNAV 1	-
005	TF	UP100	-	278 (269.6)	10.5	-	+10 000	-	37°24'38.7"N 126°22'23.8"E	-	RNAV 1	-
006	TF	NOPIK	-	278 (269.5)	34.5	-	-	-	37°24'12.0"N 125°39'05.0"E	-	RNAV 1	-

RNAV BULTI 1U												
Serial Number	Path Descriptor	Waypoint Identifier	Fly-over	Course/Track °M(°T)	Distance (NM)	Turn direction	Altitude (ft)	Speed (kt)	Coordinates	VPA/RDH	Navigation specification	Remarks
001	CF	UD050	-	14L-144(135.0) 14R-141(132.4)	14L-4.0 14R-4.2	R	-	-	37°30'01.9"N 126°51'58.7"E	-	RNAV 1	-
002	TF	UD060	-	171 (162.3)	8.1	-	-6 000	-	37°22'16.6"N 126°55'04.6"E	-	RNAV 1	-
003	TF	UD080	-	154 (145.5)	10.0	-	@8 000	-	37°14'03.3"N 127°02'08.6"E	-	RNAV 1	-
004	TF	UD100	-	206 (197.1)	9.0	-	-	-	37°05'26.4"N 126°58'50.5"E	-	RNAV 1	-
005	TF	UD160	-	206 (197.0)	10.0	-	-	-	36°55'51.6"N 126°55'11.3"E	-	RNAV 1	-
006	TF	BULTI	-	209 (200.2)	13.3	-	@FL 160	-	36°43'22.3"N 126°49'29.7"E	-	RNAV 1	-

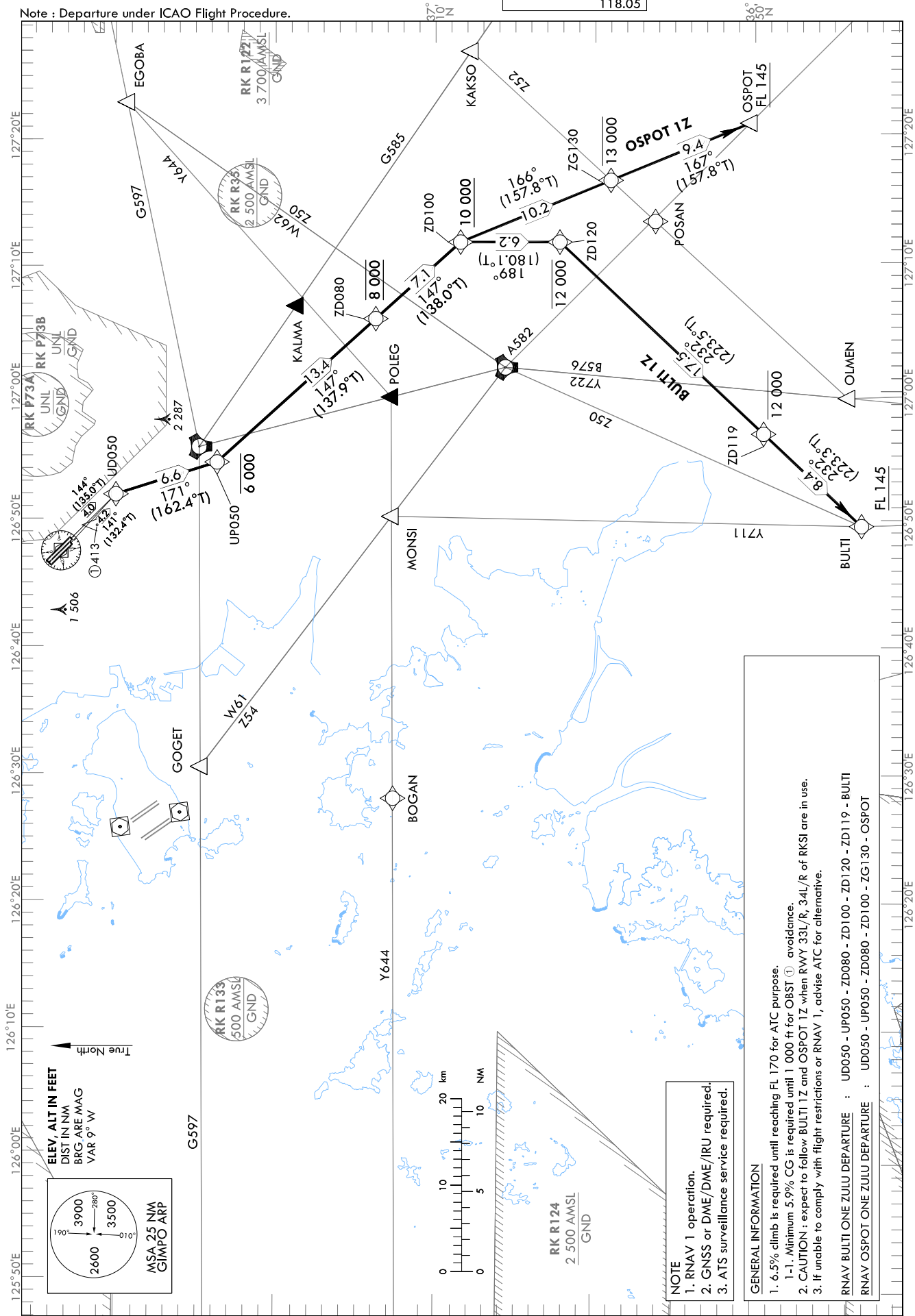
STANDARD DEPARTURE CHART
INSTRUMENT (SID) - ICAO

TRANSITION ALT 14 000
TRANSITION LVL FL 140

SEOUL	DEP	125.15
		121.4
		124.8
GIMPO	TWR	118.1
		118.05

SEOUL/Gimpo Intl(RKSS)
RWY 14L/R
RNAV BULTI 1Z, RNAV OSPOT 1Z

Note : Departure under ICAO Flight Procedure.



ELEV. ALT IN FEET
DIST IN NM
BRG ARE MAG
VAR 9° W

MSA 25 NM
GIMPO ARP

3900
3500
2600

190° 280° 010°



NOTE
1. RNAV 1 operation.
2. GNSS or DME/DME/IRU required.
3. ATS surveillance service required.

GENERAL INFORMATION
1. 6.5% climb is required until reaching FL 170 for ATC purpose.
1-1. Minimum 5.9% CG is required until 1 000 ft for OBST ① avoidance.
2. CAUTION : expect to follow BULTI 1Z and OSPOT 1Z when RWY 33L/R, 34L/R of RKSI are in use.
3. If unable to comply with flight restrictions or RNAV 1, advise ATC for alternative.

RNAV BULTI ONE ZULU DEPARTURE : UD050 - UP050 - ZD080 - ZD100 - ZD120 - ZD119 - BULTI
RNAV OSPOT ONE ZULU DEPARTURE : UD050 - UP050 - ZD080 - ZD100 - ZG130 - OSPOT

Change : Page control.

SEOUL/Gimpo Intl(RKSS)
RWY 14L/R
RNAV BULTI 1Z, RNAV OSPOT 1Z

AERONAUTICAL DATA TABULATION

Standard Instrument Departure Procedure Coding Tables

RNAV BULTI 1Z												
Serial Number	Path Descriptor	Waypoint Identifier	Fly-over	Course/Track °M(°T)	Distance (NM)	Turn direction	Altitude (ft)	Speed (kt)	Coordinates	VPA/RDH	Navigation specification	Remarks
001	CF	UD050	-	14L-144(135.0) 14R-141(132.4)	1.4L-4.0 1.4R-4.2	R	-	-	37°30'01.9"N 126°51'58.7"E	-	RNAV 1	-
002	TF	UP050	-	171 (162.4)	6.6	-	-6 000	-	37°23'42.2"N 126°54'29.3"E	-	RNAV 1	-
003	TF	ZD080	-	147 (137.9)	13.4	-	@8 000	-	37°13'46.2"N 127°05'43.1"E	-	RNAV 1	-
004	TF	ZD100	-	147 (138.0)	7.1	-	+10 000	-	37°08'27.2"N 127°11'42.1"E	-	RNAV 1	-
005	TF	ZD120	-	189 (180.1)	6.2	-	-12 000	-	37°02'14.2"N 127°11'41.1"E	-	RNAV 1	-
006	TF	ZD119	-	232 (223.5)	17.5	-	-12 000	-	36°49'30.3"N 126°56'40.8"E	-	RNAV 1	-
007	TF	BULTI	-	232 (223.3)	8.4	-	+FL 145	-	36°43'22.3"N 126°49'29.7"E	-	RNAV 1	-

RNAV OSPOT 1Z												
Serial Number	Path Descriptor	Waypoint Identifier	Fly-over	Course/Track °M(°T)	Distance (NM)	Turn direction	Altitude (ft)	Speed (kt)	Coordinates	VPA/RDH	Navigation specification	Remarks
001	CF	UD050	-	14L-144(135.0) 14R-141(132.4)	1.4L-4.0 1.4R-4.2	R	-	-	37°30'01.9"N 126°51'58.7"E	-	RNAV 1	-
002	TF	UP050	-	171 (162.4)	6.6	-	-6 000	-	37°23'42.2"N 126°54'29.3"E	-	RNAV 1	-
003	TF	ZD080	-	147 (137.9)	13.4	-	@8 000	-	37°13'46.2"N 127°05'43.1"E	-	RNAV 1	-
004	TF	ZD100	-	147 (138.0)	7.1	-	+10 000	-	37°08'27.2"N 127°11'42.1"E	-	RNAV 1	-
005	TF	ZG130	-	166 (157.8)	10.2	-	-13 000	-	36°59'01.9"N 127°16'29.6"E	-	RNAV 1	-
006	TF	OSPOT	-	167 (157.8)	9.4	-	+FL 145	-	36°50'18.1"N 127°20'54.9"E	-	RNAV 1	-

Change : Page control.

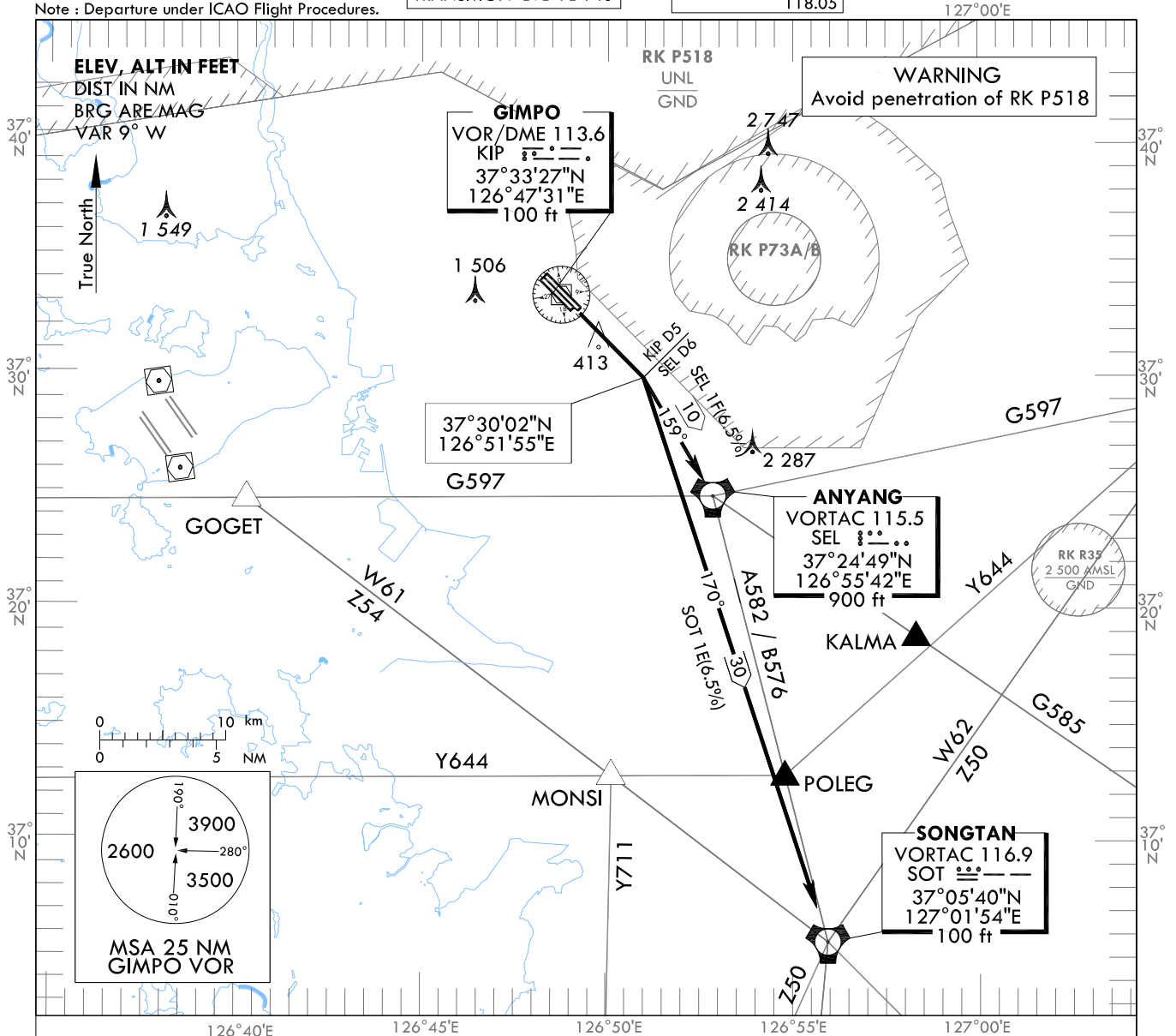
STANDARD DEPARTURE CHART
INSTRUMENT (SID) - ICAO

TRANSITION ALT 14 000
TRANSITION LVL FL 140

SEOUL DEP	125.15
	121.4
	124.8
GIMPO TWR	118.1
	118.05

SEOUL/Gimpo Intl(RKSS)
RWY 14L/R
SEL 1F, SOT 1E

Note : Departure under ICAO Flight Procedures.



GENERAL INFORMATION

1. 6.5% CG necessary for Airspace and ATC purpose and 4.4% for avoiding OBST.
2. If unable to comply with flight restrictions, advise ATC well before departure.
3. Stepped climb : Due to interaction with other routes.

SEL(ANYANG) ONE FOXTROT DEPARTURE :

TAKE OFF RWY 14 L/R : Direct R 144 KIP/D5(if KIP not available, climb on runway HDG) turn right to intercept R 339 SEL and proceed to SEL Cross SEL at or above 4 000 ft.
Maintain 6 000 ft until instructed by ATC.
- For airway B576 or A582, cross 4 DME south of SEL at or above 5 000 ft
SOT at or above 11 000 ft, 8 DME south of SOT at or above FL 150 unless cleared by ATC.
- For airway G597 cross EGOBA at or above 8 000 ft unless cleared by ATC.

SOT(SONGTAN) ONE ECHO DEPARTURE :

TAKE OFF RWY 14 L/R : Direct R 144 KIP/D5(if KIP not available, climb on runway HDG) turn right to intercept R 350 SOT and proceed to SOT. Maintain 6 000 ft until instructed by ATC.

Change : Page control.

INTENTIONALLY

LEFT

BLANK

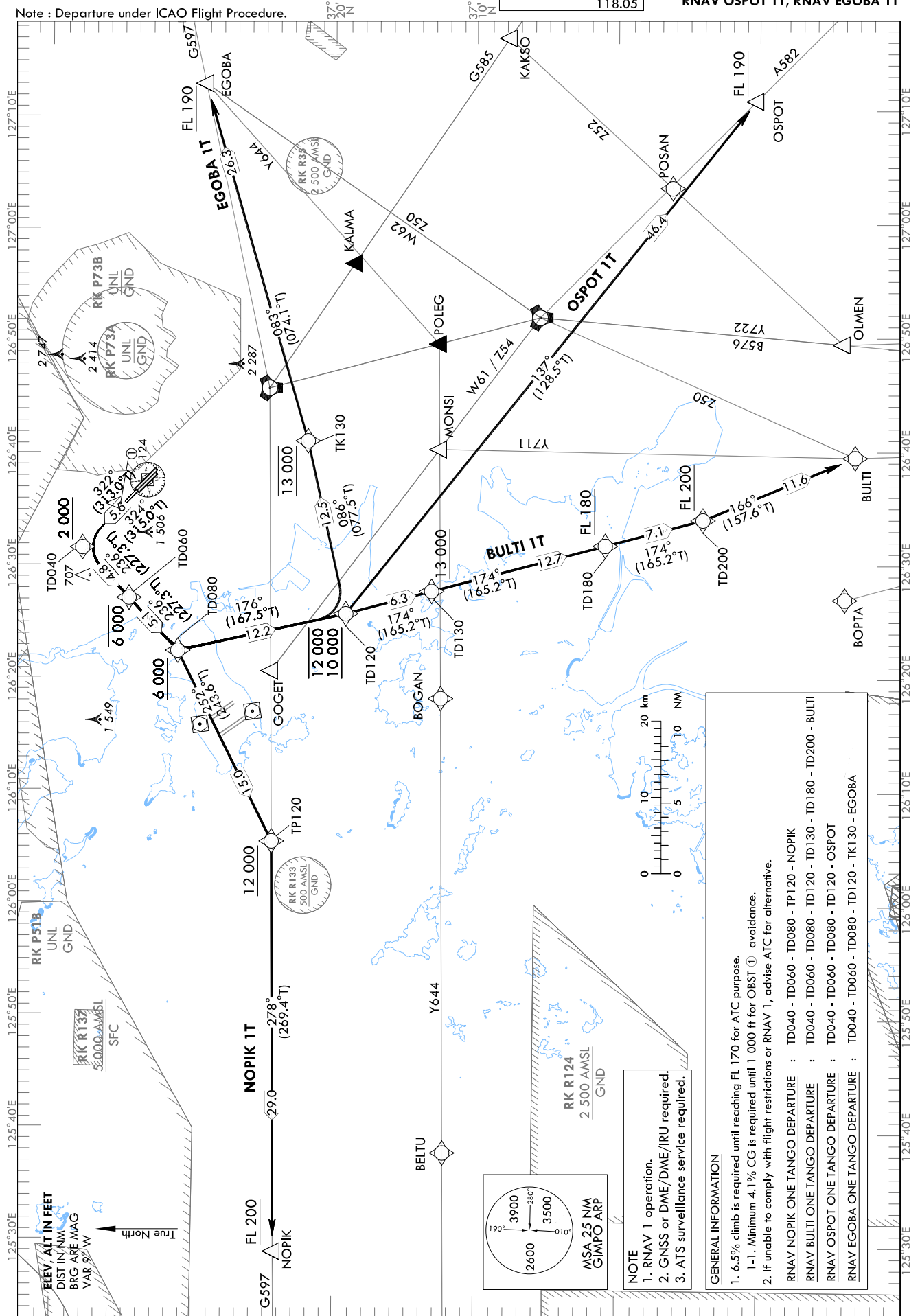
STANDARD DEPARTURE CHART
INSTRUMENT (SID) - ICAO

TRANSITION ALT 14 000
TRANSITION LVL FL 140

SEOUL	DEP	125.15
		121.4
		124.8
GIMPO	TWR	118.1
		118.05

SEOUL/Gimpo Intl(RKSS)
RWY 32L/R
RNAV NOPIK 1T, RNAV BULTI 1T
RNAV OSPOT 1T, RNAV EGOBA 1T

Note : Departure under ICAO Flight Procedure.



NOTE
1. RNAV 1 operation.
2. GNSS or DME/DME/IRU required.
3. ATS surveillance service required.

GENERAL INFORMATION
1. 6.5% climb is required until reaching FL 170 for ATC purpose.
1-1. Minimum 4.1% CG is required until 1 000 ft for OBST ① avoidance.
2. If unable to comply with flight restrictions or RNAV 1, advise ATC for alternative.

RNAV NOPIK ONE TANGO DEPARTURE : TD040 - TD060 - TD080 - TP120 - NOPIK
RNAV BULTI ONE TANGO DEPARTURE : TD040 - TD060 - TD080 - TD120 - TD130 - TD180 - TD200 - BULTI
RNAV OSPOT ONE TANGO DEPARTURE : TD040 - TD060 - TD080 - TD120 - OSPOT
RNAV EGOBA ONE TANGO DEPARTURE : TD040 - TD060 - TD080 - TD120 - TK130 - EGOBA

Change : Page control.

SEOUL/Gimpo Intl(RKSS)
RWY 32L/R
RNAV NOPIK 1T, RNAV BULTI 1T

AERONAUTICAL DATA TABULATION

Standard Instrument Departure Procedure Coding Tables

Serial Number	Path Descriptor	Waypoint Identifier	Fly-over	Course/Track °M(°T)	Distance (NM)	Turn direction	Altitude (ft)	Speed (kt)	Coordinates	VPA/RDH	Navigation specification	Remarks
001	CF	TD040	-	32L-324(315.0) 32R-322(313.0)	5.6	L	+2 000	-	37°38'03.0"N 126°41'33.7"E	-	RNAV 1	-
002	TF	TD060	-	236 (227.3)	4.8	-	-6 000	-	37°34'45.5"N 126°37'04.7"E	-	RNAV 1	-
003	TF	TD080	-	236 (227.3)	5.1	-	+6 000	-	37°31'17.7"N 126°32'22.3"E	-	RNAV 1	-
004	TF	TP120	-	252 (243.6)	15.0	-	+12 000	-	37°24'35.5"N 126°15'29.3"E	-	RNAV 1	-
005	TF	NOPIK	-	278 (269.4)	29.0	-	+FL 200	-	37°24'12.0"N 125°39'05.0"E	-	RNAV 1	-

Serial Number	Path Descriptor	Waypoint Identifier	Fly-over	Course/Track °M(°T)	Distance (NM)	Turn direction	Altitude (ft)	Speed (kt)	Coordinates	VPA/RDH	Navigation specification	Remarks
001	CF	TD040	-	32L-324(315.0) 32R-322(313.0)	5.6	L	+2 000	-	37°38'03.0"N 126°41'33.7"E	-	RNAV 1	-
002	TF	TD060	-	236 (227.3)	4.8	-	-6 000	-	37°34'45.5"N 126°37'04.7"E	-	RNAV 1	-
003	TF	TD080	-	236 (227.3)	5.1	-	+6 000	-	37°31'17.7"N 126°32'22.3"E	-	RNAV 1	-
004	TF	TD120	-	176 (167.5)	12.2	-	-12 000 +10 000	-	37°19'24.8"N 126°35'40.7"E	-	RNAV 1	-
005	TF	TD130	-	174 (165.2)	6.3	-	+13 000	-	37°13'20.6"N 126°37'40.9"E	-	RNAV 1	-
006	TF	TD180	-	174 (165.2)	12.7	-	+FL 180	-	37°01'03.4"N 126°41'43.1"E	-	RNAV 1	-
007	TF	TD200	-	174 (165.2)	7.1	-	+FL 200	-	36°54'08.6"N 126°43'59.3"E	-	RNAV 1	-
008	TF	BULTI	-	166 (157.6)	11.6	-	-	-	36°43'23.3"N 126°49'29.7"E	-	RNAV 1	-

Change : Page control.

SEOUL/Gimpo Intl(RKSS)
RWY 32L/R
RNAV OSPOT 1T, RNAV EGOBA 1T

AERONAUTICAL DATA TABULATION

Standard Instrument Departure Procedure Coding Tables

Serial Number	Path Descriptor	Waypoint Identifier	Fly-over	Course/Track °M(°T)	Distance (NM)	Turn direction	Altitude (ft)	Speed (kt)	Coordinates	VPA/RDH	Navigation specification	Remarks
001	CF	TD040	-	32L-324(315.0) 32R-322(313.0)	5.6	L	+2 000	-	37°38'03.0"N 126°41'33.7"E	-	RNAV 1	-
002	TF	TD060	-	236 (227.3)	4.8	-	-6 000	-	37°34'45.5"N 126°37'04.7"E	-	RNAV 1	-
003	TF	TD080	-	236 (227.3)	5.1	-	+6 000	-	37°31'17.7"N 126°32'22.3"E	-	RNAV 1	-
004	TF	TD120	-	176 (167.5)	12.2	-	-12 000 +10 000	-	37°19'24.8"N 126°35'40.7"E	-	RNAV 1	-
005	TF	OSPOT	-	137 (128.5)	46.4	-	+FL 190	-	36°50'18.1"N 127°20'54.9"E	-	RNAV 1	-

Serial Number	Path Descriptor	Waypoint Identifier	Fly-over	Course/Track °M(°T)	Distance (NM)	Turn direction	Altitude (ft)	Speed (kt)	Coordinates	VPA/RDH	Navigation specification	Remarks
001	CF	TD040	-	32L-324(315.0) 32R-322(313.0)	5.6	L	+2 000	-	37°38'03.0"N 126°41'33.7"E	-	RNAV 1	-
002	TF	TD060	-	236 (227.3)	4.8	-	-6 000	-	37°34'45.5"N 126°37'04.7"E	-	RNAV 1	-
003	TF	TD080	-	236 (227.3)	5.1	-	+6 000	-	37°31'17.7"N 126°32'22.3"E	-	RNAV 1	-
004	TF	TD120	-	176 (167.5)	12.2	-	-12 000 +10 000	-	37°19'24.8"N 126°35'40.7"E	-	RNAV 1	-
005	TF	TK130	-	086 (077.5)	12.5	-	@13 000	-	37°22'05.9"N 126°51'00.0"E	-	RNAV 1	-
006	TF	EGOBA	-	083 (074.1)	26.3	-	+FL 190	-	37°29'14.7"N 127°22'45.9"E	-	RNAV 1	-

Change : Page control.

INTENTIONALLY

LEFT

BLANK

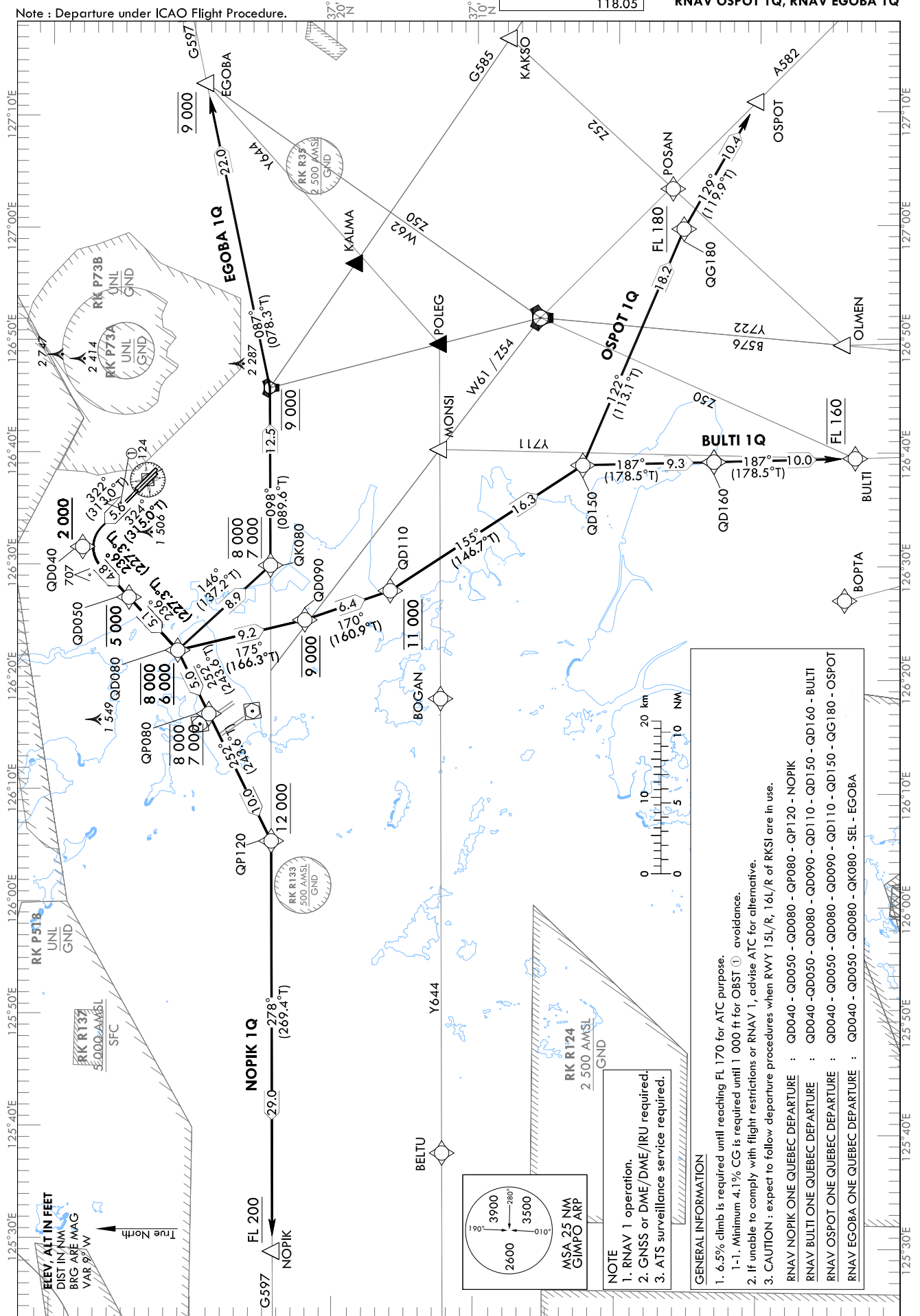
STANDARD DEPARTURE CHART
INSTRUMENT (SID) - ICAO

TRANSITION ALT 14 000
TRANSITION LVL FL 140

SEOUL	DEP	125.15
		121.4
		124.8
GIMPO	TWR	118.1
		118.05

SEOUL/Gimpo Intl(RKSS)
RWY 32L/R
RNAV NOPIK 1Q, RNAV BULTI 1Q
RNAV OSPOT 1Q, RNAV EGOBA 1Q

Note : Departure under ICAO Flight Procedure.



Change : Page control.

NOTE
1. RNAV 1 operation.
2. GNSS or DME/DME/IRU required.
3. ATIS surveillance service required.

GENERAL INFORMATION

- 6.5% climb is required until reaching FL 170 for ATC purpose.
 - 1-1. Minimum 4.1% CG is required until 1 000 ft for OBST avoidance.
 - If unable to comply with flight restrictions or RNAV 1, advise ATIS for alternative.
 - CAUTION :** expect to follow departure procedures when RWY 15L/R, 16L/R of RKSS are in use.
- RNAV NOPIK ONE QUEBEC DEPARTURE : QD040 - QD050 - QD080 - QD090 - QD110 - QD150 - QD160 - NOPIK
RNAV BULTI ONE QUEBEC DEPARTURE : QD040 - QD050 - QD080 - QD090 - QD110 - QD150 - QD160 - BULTI
RNAV OSPOT ONE QUEBEC DEPARTURE : QD040 - QD050 - QD080 - QD090 - QD110 - QD150 - QD160 - OSPOT
RNAV EGOBA ONE QUEBEC DEPARTURE : QD040 - QD050 - QD080 - QD090 - QD110 - QD150 - QD160 - EGOBA

SEOUL/Gimpo Intl(RKSS)
RWY 32L/R
RNAV NOPIK 1Q, RNAV BULTI 1Q

AERONAUTICAL DATA TABULATION

Standard Instrument Departure Procedure Coding Tables

RNAV NOPIK 1Q

Serial Number	Path Descriptor	Waypoint Identifier	Fly-over	Course/Track °M(°T)	Distance (NM)	Turn direction	Altitude (ft)	Speed (kt)	Coordinates	VPA/RDH	Navigation specification	Remarks
001	CF	GD040	-	32L-324(315.0) 32R-322(313.0)	5.6	L	+2 000	-	37°38'03.0"N 126°41'33.7"E	-	RNAV 1	-
002	TF	GD050	-	236 (227.3)	4.8	-	-5 000	-	37°34'45.5"N 126°37'04.7"E	-	RNAV 1	-
003	TF	GD080	-	236 (227.3)	5.1	-	-8 000 +6 000	-	37°31'17.7"N 126°32'22.3"E	-	RNAV 1	-
004	TF	QP080	-	252 (243.6)	5.0	-	-8 000 +7 000	-	37°29'04.1"N 126°26'44.7"E	-	RNAV 1	-
005	TF	GP120	-	252 (243.6)	10.0	-	+12 000	-	37°24'35.5"N 126°15'29.3"E	-	RNAV 1	-
006	TF	NOPIK	-	278 (269.4)	29.0	-	+FL 200	-	37°24'12.0"N 125°39'05.0"E	-	RNAV 1	-

RNAV BULTI 1Q

Serial Number	Path Descriptor	Waypoint Identifier	Fly-over	Course/Track °M(°T)	Distance (NM)	Turn direction	Altitude (ft)	Speed (kt)	Coordinates	VPA/RDH	Navigation specification	Remarks
001	CF	GD040	-	32L-324(315.0) 32R-322(313.0)	5.6	L	+2 000	-	37°38'03.0"N 126°41'33.7"E	-	RNAV 1	-
002	TF	GD050	-	236 (227.3)	4.8	-	-5 000	-	37°34'45.5"N 126°37'04.7"E	-	RNAV 1	-
003	TF	GD080	-	236 (227.3)	5.1	-	-8 000 +6 000	-	37°31'17.7"N 126°32'22.3"E	-	RNAV 1	-
004	TF	GD090	-	175 (166.3)	9.2	-	@9 000	-	37°22'18.4"N 126°35'07.0"E	-	RNAV 1	-
005	TF	GD110	-	170 (160.9)	6.4	-	@11 000	-	37°16'16.3"N 126°37'43.8"E	-	RNAV 1	-
006	TF	GD150	-	155 (146.7)	16.3	-	-	-	37°02'39.6"N 126°48'52.6"E	-	RNAV 1	-
007	TF	GD160	-	187 (178.5)	9.3	-	-	-	36°53'22.9"N 126°49'10.5"E	-	RNAV 1	-
008	TF	BULTI	-	187 (178.5)	10.0	-	@FL 160	-	36°43'22.3"N 126°49'29.7"E	-	RNAV 1	-

Change : Page control.

SEOUL/Gimpo Intl(RKSS)
RWY 32L/R
RNAV OSPOT 1Q, RNAV EGOBA 1Q

AERONAUTICAL DATA TABULATION

Standard Instrument Departure Procedure Coding Tables

RNAV OSPOT 1Q												
Serial Number	Path Descriptor	Waypoint Identifier	Fly-over	Course/Track °M(°T)	Distance (NM)	Turn direction	Altitude (ft)	Speed (kt)	Coordinates	VPA/RDH	Navigation specification	Remarks
001	CF	GD040	-	32L-324(315.0) 32R-322(313.0)	5.6	L	+2 000	-	37°38'03.0"N 126°41'33.7"E	-	RNAV 1	-
002	TF	GD050	-	236 (227.3)	4.8	-	-5 000	-	37°34'45.5"N 126°37'04.7"E	-	RNAV 1	-
003	TF	GD080	-	236 (227.3)	5.1	-	-8 000 +6 000	-	37°31'17.7"N 126°32'22.3"E	-	RNAV 1	-
004	TF	GD090	-	175 (166.3)	9.2	-	@9 000	-	37°22'18.4"N 126°35'07.0"E	-	RNAV 1	-
005	TF	GD110	-	170 (160.9)	6.4	-	@11 000	-	37°16'16.3"N 126°37'43.8"E	-	RNAV 1	-
006	TF	GD150	-	155 (146.7)	16.3	-	-	-	37°02'39.6"N 126°48'52.6"E	-	RNAV 1	-
007	TF	QG180	-	122 (113.1)	18.2	-	+FL 180	-	36°55'29.2"N 127°09'43.6"E	-	RNAV 1	-
008	TF	OSPOT	-	129 (119.9)	10.4	-	-	-	36°50'18.1"N 127°20'54.9"E	-	RNAV 1	-

RNAV EGOBA 1Q												
Serial Number	Path Descriptor	Waypoint Identifier	Fly-over	Course/Track °M(°T)	Distance (NM)	Turn direction	Altitude (ft)	Speed (kt)	Coordinates	VPA/RDH	Navigation specification	Remarks
001	CF	GD040	-	32L-324(315.0) 32R-322(313.0)	5.6	L	+2 000	-	37°38'03.0"N 126°41'33.7"E	-	RNAV 1	-
002	TF	GD050	-	236 (227.3)	4.8	-	-5 000	-	37°34'45.5"N 126°37'04.7"E	-	RNAV 1	-
003	TF	GD080	-	236 (227.3)	5.1	-	-8 000 +6 000	-	37°31'17.7"N 126°32'22.3"E	-	RNAV 1	-
004	TF	GK080	-	146 (137.2)	8.9	-	-8 000 +7 000	-	37°24'45.2"N 126°39'57.2"E	-	RNAV 1	-
005	TF	SEL	-	098 (089.6)	12.5	-	@9 000	-	37°24'49.0"N 126°55'42.1"E	-	RNAV 1	-
006	TF	EGOBA	-	087 (078.3)	22.0	-	@9 000	-	37°29'14.7"N 127°22'45.9"E	-	RNAV 1	-

INTENTIONALLY

LEFT

BLANK

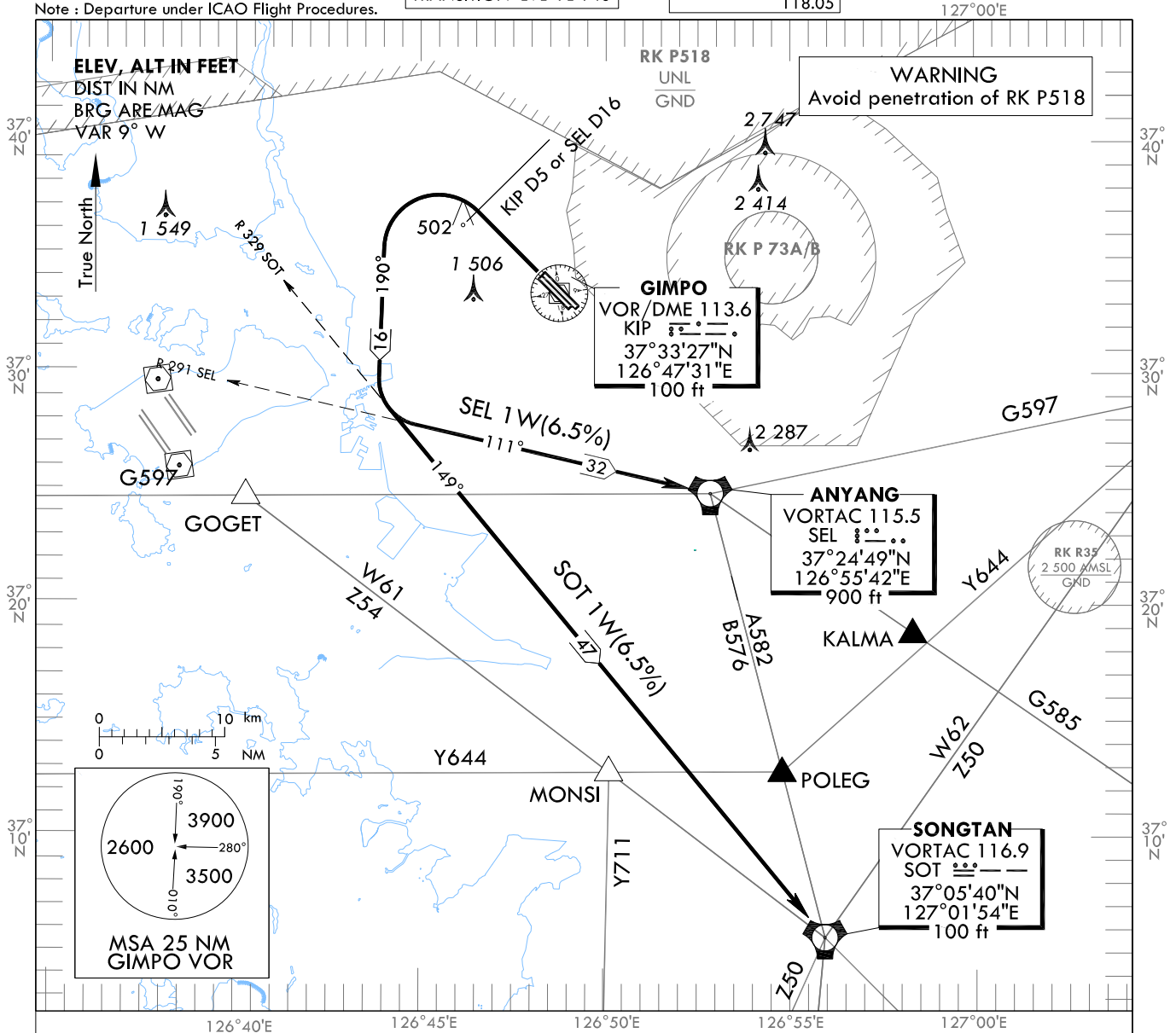
STANDARD DEPARTURE CHART
INSTRUMENT (SID) - ICAO

TRANSITION ALT 14 000
TRANSITION LVL FL 140

SEOUL DEP	125.15
	121.4
	124.8
GIMPO TWR	118.1
	118.05

SEOUL/Gimpo Intl(RKSS)
RWY 32L/R
SEL 1W, SOT 1W

Note : Departure under ICAO Flight Procedures.



GENERAL INFORMATION

1. 6.5% CG necessary for Airspace and ATC purpose and 4.8% for avoiding OBST.
2. If unable to comply with flight restrictions, advise ATC well before departure.
3. Stepped climb : Due to interaction with other routes. Do not climb above 4 000 ft unless cleared by ATC.
4. First turn limited maximum 250 kt IAS.
5. All of turns are based on 25 degrees bank angle due to airspace restricton.

SEL(ANYANG) ONE WHISKY DEPARTURE :

Climb on R 324 KIP(or RWY HDG) until KIP D5(or SEL D16),
then turn left HDG 190° to intercept R 291 SEL then proceed to SEL.
Maintain 4 000 ft until instructed by ATC.

SOT(SONGTAN) ONE WHISKY DEPARTURE :

Climb on R 324 KIP(or RWY HDG) until KIP D5(or SEL D16),
then turn left HDG 190° to intercept R 329 SOT then proceed to SOT.
Maintain 4 000 ft until instructed by ATC.

Change : Page control.

INTENTIONALLY

LEFT

BLANK

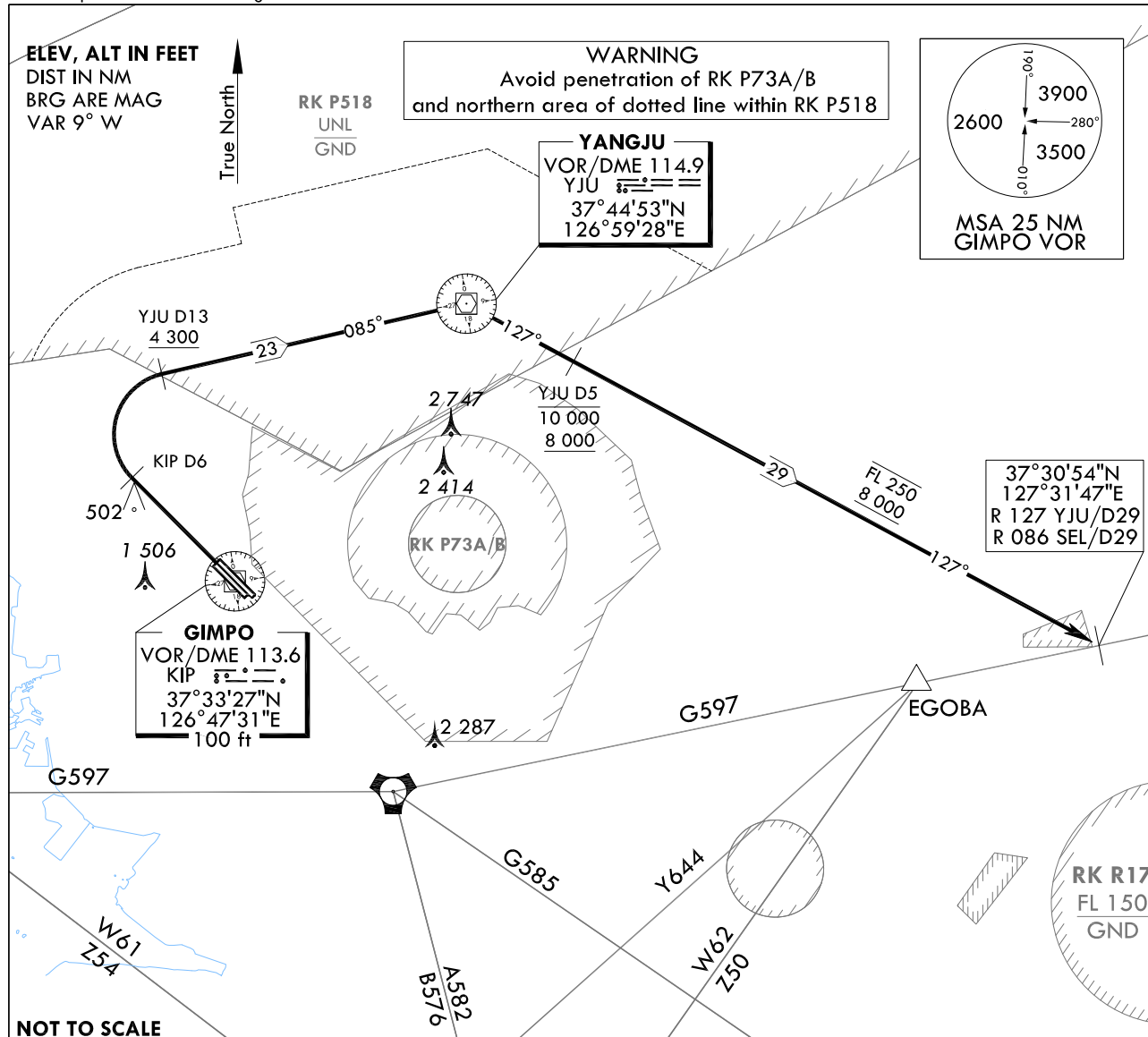
STANDARD DEPARTURE CHART
INSTRUMENT (SID) - ICAO

TRANSITION ALT 14 000
TRANSITION LVL FL 140

SEOUL DEP	125.15
	121.4
	124.8
GIMPO TWR	118.1
	118.05

SEOUL/Gimpo Intl(RKSS)
RWY 32L/R
KARBU 1W

Note : Departure under ICAO Flight Procedures.



NOTE

1. Minimum CG 7% to 4 300 ft for noise abatement, then resume normal CG.
2. Request of this procedure shall be made at least 10 minutes prior to take-off.
3. Operating Hours
 - SAT, SUN and Holiday : 0300 - 1200 UTC
 - Other days : 0700 - 1200 UTC

KARBU ONE WHISKY DEPARTURE :

Climb on R 324 KIP to D6, then turn right to intercept R 265 YJU/D13, then proceed to YJU.
At YJU, turn right to track outbound R 127 YJU until joining G597. Cross R 265 YJU/D13 at or above 4 300 ft, R 127 YJU/D5 between 8 000 ft and 10 000 ft, then at or below FL 250 until joining G597.

INTENTIONALLY

LEFT

BLANK